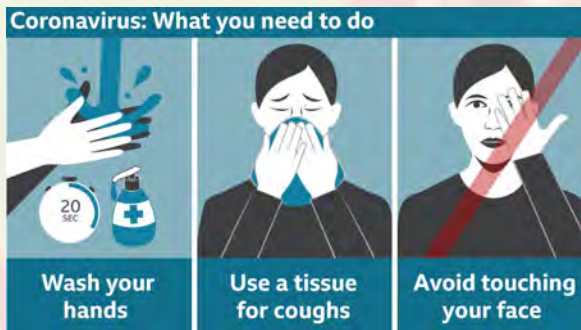
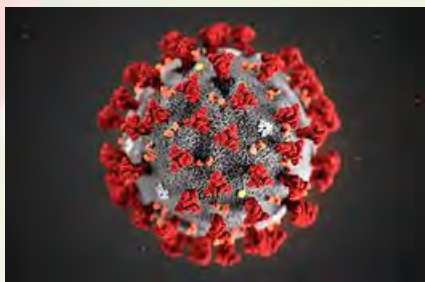


## What is RETAKE?

A randomised controlled trial testing whether an early, stroke-specific vocational rehabilitation (ESSVR) intervention is more effective than usual care alone for getting people back to work after their stroke.

## Study update – COVID-19 crisis

We hope you are all healthy and safe, and wanted to update you on positive steps we are taking to manage the effects of COVID-19.



### Recruitment:

- Each site is responsible for deciding whether they have enough resources to continue recruiting participants. We understand this is not a priority for them right now. Due to the COVID-19 crisis, recruitment has been paused at some sites.
  - Solution** - Consenting sites will continue recruiting participants when the immediate crisis is over. We are exploring ways of boosting future recruitment.
- The research team recently met with the NIHR Health Technology Assessment Programme (who fund the study) on 17<sup>th</sup> March to discuss progress. Dr Kate Radford requested a funded extension to continue recruitment for another 12 months. Due to the unfolding COVID-19 crisis, the funder could not consider this.
- Plan** - To re-visit the funding request when the immediate crisis is over.

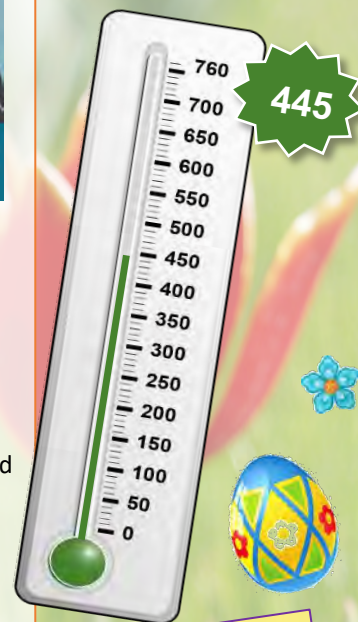
### Delivery of the ESSVR intervention:

- All intervention delivery is now taking place by telephone or online. This is a new way of working for some and the mentors are helping the OTs adapt. We are trying to record how the intervention changes when delivered in this way.
- Some RETAKE therapists may be unable to deliver the intervention as they are re-called to the wards.
  - Solution** – We are exploring how our central team of OT mentors could continue providing the intervention to RETAKE participants left without support.
  - Solution** – We are also talking to our Australian colleagues who are experts in tele-rehabilitation about novel ways of delivering the vocational rehabilitation.

### Collection of follow-up and interview data:

- RETAKE research staff are currently required to work from home, meaning that follow-up data cannot be collected online or via post, and interviews cannot be conducted face-to-face.
  - Solution** – Questionnaires have been posted to participants due a follow-up to the end of April. Staff are also collecting follow-up data and conducting interviews via telephone.]

We are also planning to collect extra information to capture the impact of Covid-19 on people's jobs and their ability to work.



So far...  
**445** participants have been recruited, and **50** therapists trained to deliver the ESSVR intervention.

### Other News:

- While recruitment is paused, the RETAKE research team remain very busy conducting interviews, analysing data; writing publications and reports, and more.

- Our next Patient and Public Involvement (PPI) group meeting will be held via Zoom. Further details have been sent in an email.

Thank you for your ongoing support. Stay safe and have a lovely Easter!!

